

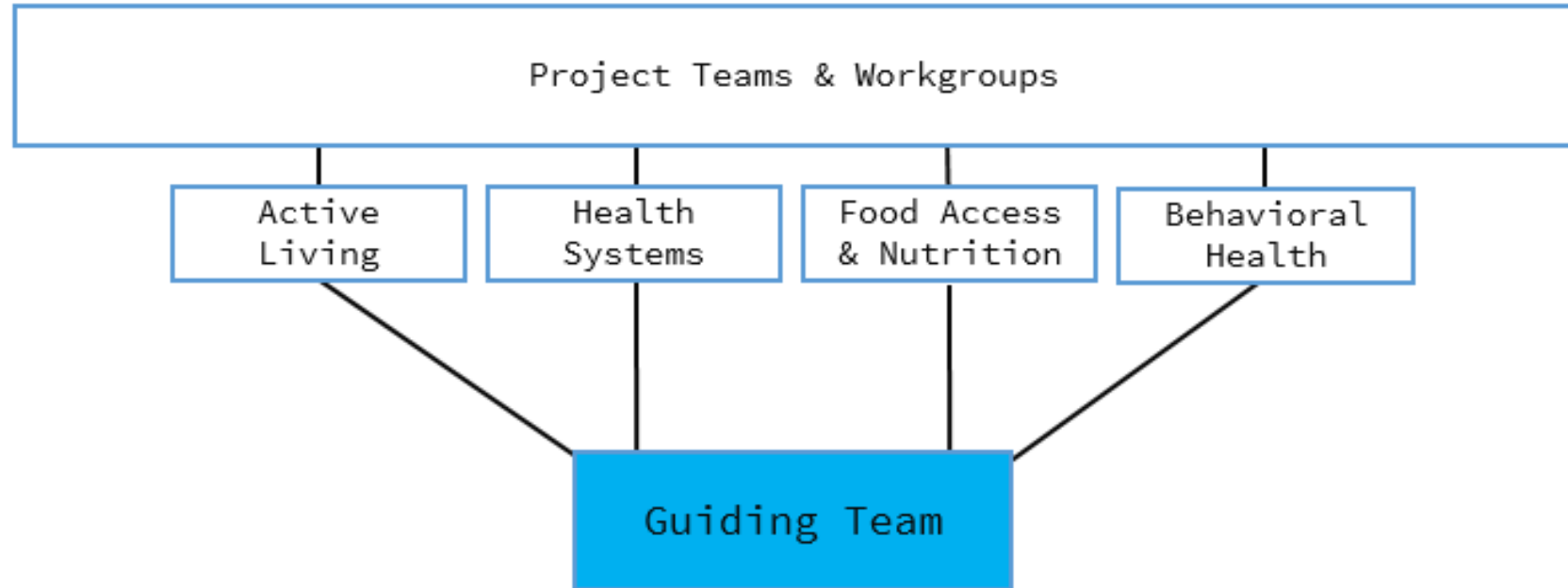
BEHAVIORAL HEALTH ASSET MAPPING COMMITTEE

Co-Chairs: Tara Martinson, Lee County HVS
Samantha Selbach, Lee Health

December 14, 2023

HISTORY

This committee was formed through the Collaboratory's Health & Wellness Coalition Behavioral Health Action Team.



HEALTH & WELLNESS COALITION GOAL

Transform Southwest Florida (Charlotte, Collier, Glades, Hendry and Lee Counties) to be among the healthiest communities in the nation by exceeding the 90th percentile for Health Indicators (Length of Life and Quality of Life) by 2040.

BEHAVIORAL HEALTH ACTION TEAM GOAL

Ensure that essential human services are readily available for the most vulnerable community members.

Outcome: Mental Health and Substance Use Services

Indicators: Demonstrate improvements in the timely provision of mental health and substance use treatment programs and services.

OUR GOAL



Short Term: Develop a geographical information system (GIS) map with behavioral health services and programs.



Long Term: Increase access to behavioral health services and programs in the region.

PURPOSE

To inventory and map behavioral health services for the adult and senior populations in the five-county region.

TIMELINE

Initial Meeting

- October 25, 2023

County Asset Mapping

- Lee – November 7, 2023
- Hendry/Glades – November 28, 2023
- Collier – December 12, 2023
- Charlotte – January 9, 2023

Review Results

- February 20, 2024

Next Steps

- March 26, 2024



ASSET MAPPING

Jason Krejci, GIS Coordinator, from Lee County HVS will create a geographical information system (GIS) asset map with the behavioral health services.

What can we do once we have the behavioral health asset map?

- Determine barriers to access
- Determine gaps in services
- Determine capacity challenges



ASSET MAPPING

What we are mapping

- Mental health and substance use programs/services
- Services for adult and senior population
- Available for professional use

What we aren't mapping at this time

- Services for children & youth population
- Available for community use

BEHAVIORAL HEALTH ASSET MAPPING FORM

The committee developed a comprehensive list of information to collect for the asset map.

Agency	Program Name	Program Description	Location	Counties Served
Date/Time of Operation	Pay Sources	Gender Specific Eligibility Requirements	Level of Care	Target Populations Served
	Services	Capacity Related Information	Citizenship / Residency Documentation	

CALL TO ACTION

We need YOUR help with
inputting programs into
the inventory list.

THANK YOU FOR YOUR HELP!



*You do not need a username and password to enter in information.



QUESTIONS?

THANK YOU!

Samantha Selbach

Lee Health

Samantha.Selbach@LeeHealth.org

Tara Martinson

Lee County HVS

Tmartinson@LeeGov.com