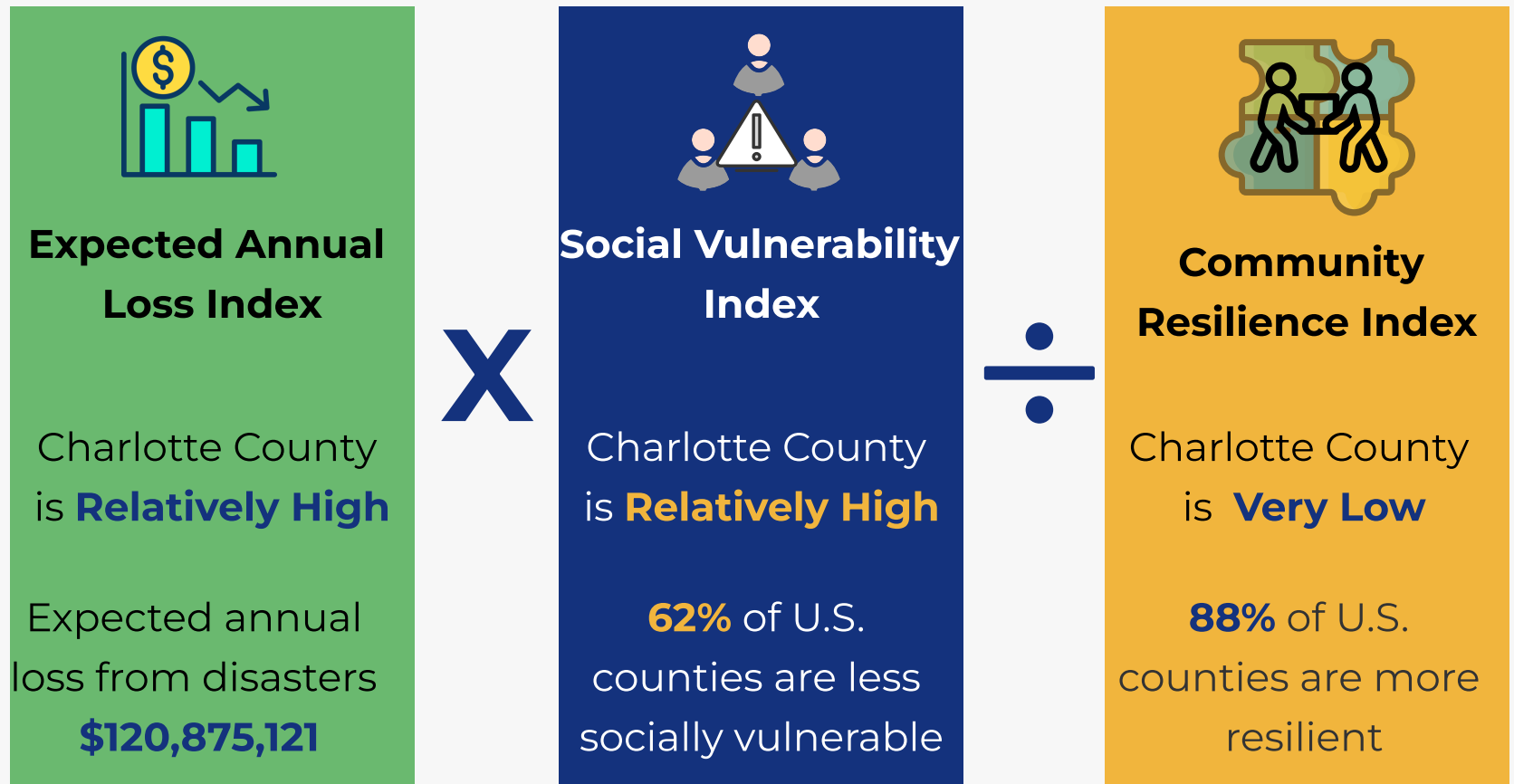


Disaster Preparedness

Charlotte County

Charlotte County's Risk index is Relatively High

The National Risk Index is a dataset and online tool to help illustrate communities most a risk for 18 natural disasters. It is calculated using the formula below



What can a community do to become more resilient?

Some Examples Include:

- Mental health support
- Personal transportation access
- Communication capacity
- Evacuation routes

- Temporary shelter availability
- Access to internet
- Flood insurance coverage
- Disaster aid experience



- Local disaster training
- Strong volunteer base
- Local food supplies
- Natural flood buffers
- Studier housing types

What are some factors that make a community more vulnerable?

Socioeconomic status

- Poverty

Household characteristics

- Aged 65 and older

Racial & ethnic minority status

- Non-English speaker

Housing type & transportation

- Mobile home

Top 5 Hazards



Lightning



Hurricane



Wildfire



Riverine Flooding



Drought

For more information please visit Swflcoalition.org

All data came from the FEMA National Risk Index

Disaster Preparedness

Charlotte County

National/State Resources

FEMA National Risk Index

- [Hazards.fema.gov/nri/learn-more](https://hazards.fema.gov/nri/learn-more)
- Learn more about the National Risk Index dataset and online tool

Florida Emergency Management

- [Floridadisaster.org/](https://floridadisaster.org/)
- The official website of the Florida Division of Emergency Management

ASPR TRACIE

- [Asprtracie.hhs.gov/](https://asprtracie.hhs.gov/)
- Technical Resources, Assistance Center, and Information Exchange (TRACIE) was created to provide information and technical assistance

NOAA, National Hurricane Center

- [Nhc.noaa.gov](https://nhc.noaa.gov)
- The mission is to save lives, mitigate property loss, improve economic efficiency, and increase understanding of the hazards.

Ready.gov

- [Ready.gov](https://ready.gov)
- National public service campaign designed to educate and empower the American people to prepare for, respond to, and mitigate emergencies and disasters.

Florida Healthcare Coalition

- [Floridahcc.org/](https://floridahcc.org/)
- Official site of the Florida Healthcare Coalitions

Local Resources

Southwest Florida Healthcare Coalition

- [Swflcoalition.org/](https://swflcoalition.org/)
- The mission of the Southwest Florida Healthcare Coalition is to develop healthcare emergency preparedness response and recovery capabilities through collaboration, training, and planning

Charlotte County Emergency Management

- [Charlottecountyfl.gov](https://charlottecountyfl.gov)
- The official website of Charlotte County's Emergency Management

Florida Department of Health in Charlotte County

- [Charlotte.floridahealth.gov](https://charlotte.floridahealth.gov)
- FDOH-Charlotte Emergency Preparedness Program is actively involved in planning and responding to the public health needs of the community in times of emergency or disaster

Your Personal Preparedness

Special Needs Shelter

- [Floridahealth.gov/spns](https://floridahealth.gov/spns)
- Learn more about special needs shelters and how to register

Disaster Preparedness Maps

- [Floridadisaster.org/disaster-preparedness-map](https://floridadisaster.org/disaster-preparedness-map)
- Evacuation zone and route maps and storm surge maps

Disaster Preparedness Checklist

- [Floridadisaster.org/checklist](https://floridadisaster.org/checklist)
- Access to a downloadable checklist

Florida Hurricane Guide

- [Floridadisaster.org/florida-hurricane-guide](https://floridadisaster.org/florida-hurricane-guide)
- The official 2024 Florida Hurricane Guide

For more information please visit [Swflcoalition.org](https://swflcoalition.org)

All data came from the [FEMA National Risk Index](https://hazards.fema.gov/nri/)